

## FAKENHAM

Although there are apparently no records now of the actual planting of Primitive Methodism in the town and adjacent villages, yet an old minute book, presumably the first one, gives some interesting particulars as to the early history of the circuit. This church was built in 1862.

At the full board of this first quarterly meeting it was resolved "that Norwich be a branch of Nottingham Circuit separate from Fakenham, and that the division take place December 30th"; also "that three men and woman be appointed to labour in the Norwich Branch and that Fakenham Branch have three men and a woman"

The ministers appointed to the two branches were as follows: Norwich - Revs. Oscroft (super), Dawson, Chapman, and Sister Birch; Fakenham - Revs. Woodford (super), Braithwaite, Kinsley, and sister Woolfit. The stewards elected for the Fakenham Branch were "Bro. Wright (treasurer) and Bro. Colman (secretary)," with the following as the Branch Committee - "Bros. Mason, Seppings, Clarke, Loose, Butters, and Thompson and Wright, of Sculthorpe." The income for the quarter was £41-14-4½ and the outgo £41-11-7½. The accounts show £4 as salary paid to each of the ministers: we may infer, therefore, that none of these were married men or married women.

These were evidently days of prosperity for the Fakenham Branch, as at the following quarterly meeting, having started Norwich Branch off as a separate centre of work, Fakenham deemed it desirable to increase their ministerial staff: hence, it was resolved. "That we have six preachers and a woman labouring in this branch next quarter". The membership reported to this meeting, March 1823, was 458 full and 80 on trial.

The Rev. W Ward in the magazine for May, 1851, says concerning the Fakenham - "Our December quarter-day was held at Walsingham. The glory rested on the camp the whole day. At the close the brethren separated in raptures, and conveyed the unction to their respective societies. A revival commenced. Persons of all grades have been converted and added to the church. A space of country measuring twenty miles by twelve miles appears to be animated with the moving power of the revival. There has been an increase of one hundred and fourteen souls with the short period of three months."

Here are some incidents in the early history of Fakenham Circuit. Although there are apparently no records now of the actual planting of Primitive Methodism in the town and adjacent villages, yet an old minute book, presumably the first one, gives some interesting particulars as to the early history of the circuit. This book begins with the minutes of the quarter-day of Fakenham Branch of Nottingham Circuit, held December 2nd, 1822. Prior to the commencement of the regular business of the meeting the following resolutions were carried, and are entered in the book under the heading "Preliminary Motions";-

- (1) That prayer be made every hour for five minutes.
- (2) That Bro. Stimpson be time-keeper.
- (3) That every speaker address the chairman.
- (4) That if any brother interrupt another while speaking, he shall for each offence forfeit one penny.
- (5) That if Bro. Stimpson exceeds the time he shall forfeit twopence.

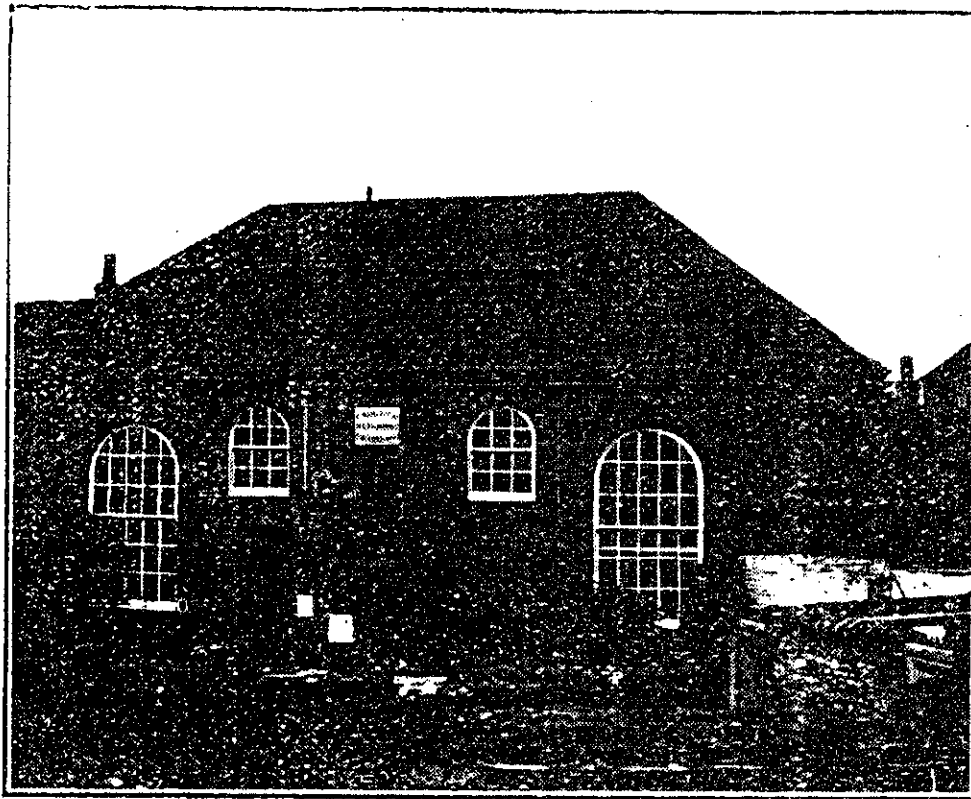
These, then were the first "Sanding Orders" for a Primitive Methodist quarterly meeting at Fakenham.

However, the subject of neglect of appointments call for more than a passing reference, - firstly, because of the means adopted by Fakenham Circuit for dealing with the delinquents, and secondly, because of its existence in some circuits even at the present time./ At first, the ministers were desired to visit the offenders and urge on them better attention to their appointments in the future. Then, probably because of the persistency of the delinquents, it was resolved that a preacher who neglects an appointment shall drop a number on the plan, and if he neglects two appointments he shall drop two numbers, and so on. This rule was printed on the plan, but it does not appear to have had the desired effect, for only two years later it was resolved, in addition to dropping them a number on the plan, "That the name of every preacher who neglects an appointment shall stand on the plan at the end of the rule, and thus be exposed for one quarter." Even this did not apparently much improve matters, as fours years afterwards it was resolved to add to the names printed on the plan at the end of the rule, the reasons why their names appeared there. Two years after this, as a final warning before striking their names off the plan altogether, it was resolved, "That there be a book provided, and that the same be called the 'black book', to insert in the names of those who neglect their appointments, and that a note be put on the plan to request the societies to send up all the neglects during the quarter. We conclude this must have had the desired effect, as the only other reference to the question during the next ten years is a repetition of the request to the societies to send particulars of all the neglects to the quarterly meetings. The number of entries in the 'black book' is not recorded in the minutes.

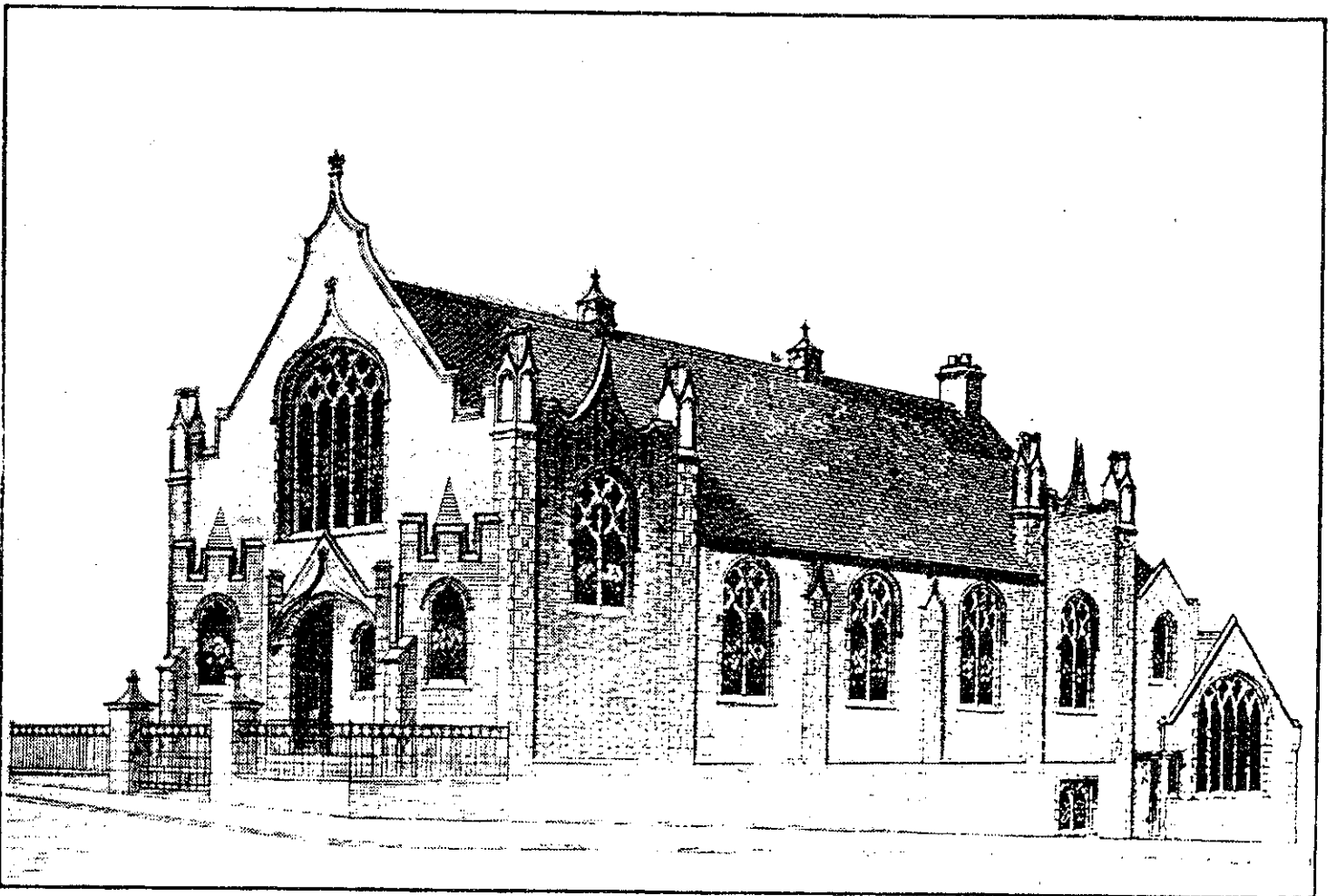
Other minutes record that from time to time letters were sent to the preachers (male and female), concerning their personal appearance.

The first District Meeting of the Norwich District was held at Fakenham in 1826, and in the arrangements made by that circuit for the Services at the District Meeting, we find it was decided that a missionary meeting be held, that Bro. Atterby preach a missionary sermon, and that a missionary meeting be held at Wells on the Friday after the District Meeting. Here are the first indications of that spirit of missionary enterprise, which was destined to figure largely in connection with East Anglian Primitive Methodism in after years. Although this District Meeting was entertained by the Fakenham friends, the delegates were somewhat lacking in reciprocating the kindness shown, for they decided, contrary to the circuit's wishes, to appoint to the circuit one minister short of the desired number. This led to an adjourned quarterly meeting being called after the District Meeting and an appeal was sent to the Conference against the action of the District Meeting, but with what results we cannot say.

In 1828 it appeared that the Rev. W.G. Belham was stationed on Fakenham Circuit, and, as at Lynn, he soon encouraged the people to build a chapel to worship in. At the November Quarterly Meeting of that year it was resolved. "That Bro. Bellham beg for Fakenham Chapel for six months," also, "That William Kirby be taken out to travel in Bro. Bellham's place." Here is the entry of the Rev. William Kirby into the Primitive Methodist ministry, which he adorned to a long term of years on the various circuits of East Anglia. The building of the chapel was evidently proceeded with at once, as at the following quarterly meeting there was a record made of the fact that it was built; in December, 1830 it was recorded that a minister's house had also been built adjoining the chapel. This house was the birth-place of the late Rev. M.S. Cushing, who although deprived by physical infirmity from serving in the active ranks of the of the ministry for a number of years, yet in his earlier ministerial life, and again in later years, having recovered from his affliction, he did noble work on several of our circuits..



FAKENHAM CHAPEL.



THE BUCKENHAM MEMORIAL CHURCH, FAKENHAM.

# NOT TOO SERIOUSLY

## IN BRIEF

### WARTS AND ALL

A FRIEND recently bought me a poster. Like all such it was cute and colourful. Two yellow ducklings cuddled up to each other in a bed of flowers. The slogan read 'A friend is someone who knows all about you and still loves you.'

I was touched, at first. Then it began to seem a bit ambivalent. Implying 'If they knew what you were really like, most people wouldn't want anything to do with you'.

I would have preferred something unambiguously flattering. Like 'To my friend who knows he is absolutely perfect and in all respects admirable'. In the end I accepted it graciously because after all, the giver is a friend, in spite of everything.

So it is now on my wall, near the other poster they bought me which reads 'Lord give me patience...right now'. It really is rather galling when someone does know all about you.

QUOTE that it came from 'Not Too SERIOUSLY' and you won't get the blame for any controversial flights of fancy expressed on this page!

But painful though it might be to admit it is only on the basis of honesty, and a love strong enough to survive it, that a true lasting relationship can be formed, with other people, or with God.

GEOFF TURNER

### WHOLE WINDOWS

YOU DO not need to think that if only you can become whole, you can then be of great use and tell others how you became whole and they can, too. You are of great use now. That use may not be what you had in mind and were unable to do. But you and your weakness, your brokenness, may be a window letting God into the world.

JOCELYN BURNELL

If you no longer feel close to God, which of you has moved?

### REAL PEACE

When peace like a river attendeth my way,  
When sorrows like sea billows roll;  
Whatever my lot, thou hast taught me to say  
'It is well, it is well with my soul.'

The author and composer of that hymn lost his wife and four children in a shipwreck. Years later, on a missionary journey, when his ship seemed near where his family perished he wrote those words. Sorrows like sea billows had indeed rolled over him. Yet all was well with his soul.

I mentally sing his song and I am refreshed. My sorrow or suffering, or whatever it is that troubles me, is trivial compared to his; but I know his Lord and Saviour as my own, and there comes to me the blest assurance that all is well with my soul.

From The Anglican Digest

### IMPERFECT LOVE

ARE YOU capable of forgiving and accepting in love a world which has disappointed you by not being perfect, a world in which there is so much unfairness and cruelty, disease and crime, earthquake and accident? Can you forgive its imperfections and love it because it is capable of containing great beauty and goodness, and because it is the only world we have?

Are you capable of forgiving and loving the people around you, even if they have hurt you and let you down by not being perfect? Can you forgive them and love them, because there aren't any perfect people around, and because the penalty for not being able to love imperfect people is condemning oneself to loneliness?

RABBI HAROLD KUSHNER  
'When Bad Things Happen to Good People'

### A PRAYER OF PREPARATION

Lord, I want to love you, yet I'm not sure.  
I want to trust you, yet I'm afraid of being taken in.  
I know I need you, yet I'm ashamed of the need.  
I want to pray, yet I'm afraid of being a hypocrite.  
I need my independence, yet I fear to be alone.  
I want to belong, yet I must be myself.

Take me, Lord, yet leave me alone.  
Lord, I believe; help thou my unbelief.  
O Lord, if you are there, you do understand, don't you?  
Give me what I need but leave me free to choose.  
Help me work it out my own way, but don't let me go.  
Let me understand myself, but don't let me despair.  
Come unto me, O Lord - I want you there.  
Lighten my darkness - but don't dazzle me.  
Help me to see what I need to do and give me strength to do it  
O Lord, I believe, help thou my unbelief.

BERNARD, SSF

Adverts: a directory of small spaces makes money.

### WELLS CHAPEL

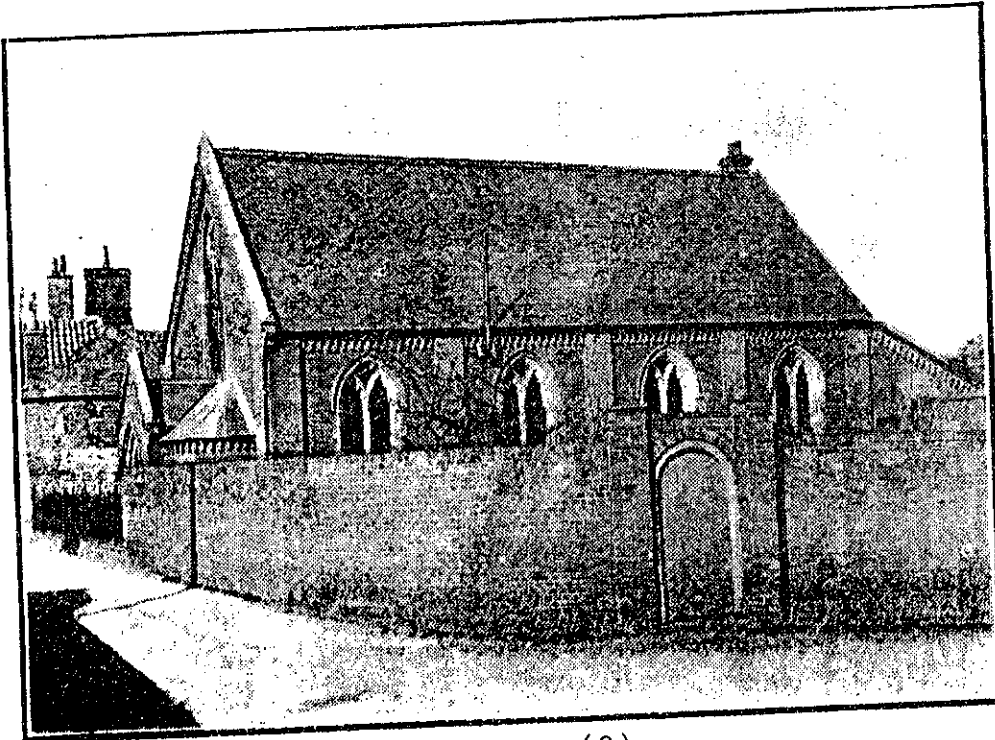
In 1889 Wells Circuit was formed from Fakenham Circuit. It is not clear when or by whom Wells was first missioned, but the names of such men as William Braithwait, George Tetley, and even Hugh Bourne are associated by the old officials with the introduction of Primitive Methodism into the town.

The first chapel was in "Ranter's " yard; this superseded by the present building in 1891.

Johnny Oxtoby is said to have missioned North Creake, on Wells Circuit, being sorely opposed by Johnny into the stream of the clergyman, who tried to get water which runs through the village: but by an adroit move, the preacher stepping aside, the clergyman fell in, much to the satisfaction of Oxtoby and the amusement of the people.

At Egmere, on the same circuit, the services are still held in a railway carriage. This has been the birthplace of many souls. At one time there were ten local preachers connected with this small society.

It is only in the past 3-4 years that this tabernacle has been removed. (1995).



(8)

WELLS CHAPEL.

COTTAGE, GRANARY, HAYLOFT AND RAILWAY CARRIAGE  
CHAPELS OF RURAL METHODISM

David Yarham, Stapleford, Cambridge.

Re-reading the article on Marshgate Church in ('The quaintest Church in Methodism', CIRPLAN, Michaelmas 1990), I was reminded of the two chapels in my home parish of Holkham on the north Norfolk coast. The parish is owned by the Earl of Leicester, whose great walled park occupies most of its area. To the north of the park lies the main village looking out over the reclaimed marshland to the pine clad sand-dunes of Holkham Bay. Three miles to the south lies the hamlet of New holkham, a semicircle of estate workers houses nestling under the belt of trees which surrounds the park.

When I was young, the chapel in the main village was, like that of Marshgate, a converted cottage. Some, I suppose, would have thought it 'quaint' but to me it had none of the charm of the New Holkham chapel where my father, a gardener on one of the estate's tenanted farms, was Society Steward and Sunday School Superintendent (as well as being an active Local Preacher). Commonly referred to by its members as 'The Granary', the chapel is just that - a converted granary over a cartshed at Longlands, the estate's home farm. Owned by the estate, and let to the Methodists for a 'peppercorn rent' (currently 5p per annum, the Granary had, I believe, first been converted to ecclesiastical use as a kind of chapel-of-ease for Anglicans living at the end of the parish. Then the Congregationalists used it for a while and when they left, the Primitive Methodists took it over.

Climb the flight of well worn stone stairs and you find yourself in a long loft of a room with low beams and lower windows with close set bars which once kept marauding sparrows from its store of grain. It was not until the late 1940s that electricity came to the village and amongst my pleasantest boyhood memories are those of lamp-lit harvest festival services, the chapel decorated with berries from the hedgerows and the table groaning under the burden of home-grown fruit and vegetables. Then there were the Sunday School Anniversary Services which used to attract folk from villages miles around - (far too many for the chapel



to accommodate so the Anniversary was always held in a club room (its self a converted cart-shed) on the same farm.

In those days the Anniversary collections were always swelled by contributions from the men on two or three of the local farms on which the workers were predominantly Methodists or had Methodist connections. One such farm was Egmore, about three miles to the south east of New Holkham. Whatever the weather, a few Egmore families would cycle over every Sunday afternoon to attend the service in the Granary. Once they had a chapel of their own - a converted railway carriage which stood in a grove of beeches near the cottages - but this had long since been closed. Egmore appears on the 1907 Plan of the Wells-nest-the-Sea Primitive Methodist Circuit and is listed as having a 2:30 pm service on Sunday and a monthly week-night meeting. The Egmore congregation had ceased to meet by the early 1920s but the old carriage still stood (used variously as a shed and a hen-house) until recent years.

Such was my home chapel - and I thought that it was surely unique in Methodism. However, when I first went on the plan in the 1960s, I found another that was very like it. I was on the Hexham Circuit at the time and used occasionally to preach at Stagshaw Bank a few miles north of Corbridge. The chapel here was a converted hay loft over a cow-byre at Stagshaw High House. It was said, though I never experienced it myself, that if a cow calved in the byre the preacher would lose half his congregation as folk went downstairs to attend her.

My wife and I visited Stagshaw Bank when I took the evening service there on 23 January 1965. The metalled road ended at the edge of a wide, snow covered field which stretched away into the darkness. We began tentatively to follow the faint tracks of a previous vehicle hoping they went in the right direction - and then he appeared, a small, white, and undoubtedly Methodist dog who ran ahead of us until we reached the chapel. My diary records that I had a congregation of sixteen that night, including a number of children.

Sadly, the chapels at Stagshaw Bank and Holkham Village have long since closed. The New Holkham Granary is still a place of worship, but the congregation is smaller now and the Sunday School, which used to attract every child in the village, is no more. Curiously, until last year at least, the Sunday School Anniversary still continues - old scholars, now living elsewhere in the area, bringing their own children to perform on that one special day of the year.

Mrs. Deborah Jarvis, daughter of the Diploma holder, known to every one as Aunt Deb, played the New Holkham organ for over sixty years. She was presented with a framed certificate to commemorate this achievement, by the Rev. Edwin Softley when he was minister in charge.

It was the custom, for several years, for the New Holkham Sunday school and congregation to hire a bus and go to Stiffkey, the Sunday evening before Christmas to take the service there.

The members and friends of New Holkham chapel have been travelling around the area as far afield as Egmore and Branthill, every Christmas eve for about seventy years collecting money for N.C.H. firstly walking, then cycling and latterly by car.

It is said that years ago an old preacher from Holkham Village used to walk to appointments, when he went as far afield as Hempstead he would arrive home on Monday mornings as the men were going to work.

THE CHAPEL AT (LONGLANDS)  
NEW HOLKHAM





# DIPLOMA OF HONOUR

This Diploma is presented to

Mr. J. Yatham

New Spolksam School, Wells

in recognition of 39 years' devoted and  
 useful service in the Sunday School.

W. M. Kelley

PRESIDENT OF CONFERENCE

A. Clayton

TREASURER OF CHURCH

John W. Cifard

GENERAL SECRETARY

LONDON

PRIMITIVE  
 METHODIST  
 SUNDAY SCHOOL  
 UNION

1930

The holder of this diploma, when courting, tested his girlfriend by going to chapel in a "Sacking Bill". If she sat beside him he knew she really loved him. If she disowned him he would not ask her to marry him. She sat with him.

FAKENHAM CIRCUIT.

Primitive Methodist Preacher's Plan, 1871 72.

The great objects and endowment of religion cannot be seriously contemplated without feeling the heart impressed by them; and as the divine influences communicated in the ordinances of His grace, we have reason to expect that God will sanctify us by His truth, and cherish in us the power of Godliness while we conscientiously observe its forms.

Table with columns: SOCIETY, PLACES, TIME, OCT., NOVEMBER, DECEMBER, JAN., 'The God which wills us to sin,' and NOTES.

NOTICES section containing Preachers' Names and Residences, a list of names with corresponding numbers and locations, and various church notices.

HYMN. "JERUSALEM JEREM." (CANT. XXII, 14). Title: "Pray Forward."

These verses on each path by deep unbroken... The plan of our trial, if we are but honest... The soul and the faithful, the most and true...

- Superintendency: London... Circuit A Ministry: Overseer, Walker, Applegate, J. Bird... Miscellaneous: Monthly Collection, L. ...



REV. JOSEPH JOHNSON.

# Primitive Methodist **SOUTH-EAST LONDON MISSION.**

HEADQUARTERS—  
**ST. GEORGE'S HALL, OLD KENT ROAD, S.E.**

BRANCHES—

East Street, Walworth, S.E.;  
Sisters' Settlement, 118, Old Kent Rd.;  
Social Institute, 99, Old Kent Road;  
Cripples' Hall, Rear of Social Institute;  
South London Lodging Houses;  
Cripples' Home, Westcliff-on-Sea.

St. George's Hall is a great soul-saving centre;  
Open doors all day long;  
Uplifts men, women, and children;  
Trains the saved to save others;  
Helps the disheartened and the despairing to a new start.  
East Street Branch daily reaches out its hand,  
And seeks to rescue the fallen and save the falling,  
Saves drunkards and gamblers from their vices,  
Teaches the blasphemer and the sensualist the better life.  
Leaning on God for strength and resources,  
Our Mission persistently goes on with its work,  
Never despairing of any man or woman;  
Does nothing for personal gain, but  
On every occasion lays hold of the helpless,  
Not doubting there is salvation for the worst.  
Many children, crippled in body and circumstance,  
Invite daily care and sympathy;  
Starving, friendless, shoeless, and hungry,  
Swarming in the courts and alleys of these slums, they  
Implore us to consider and help them.  
Our urgent need is more money, more clothing,  
No opportunity for service would then be refused.

**FUNDS URGENTLY NEEDED.**

Gifts of love and sympathy should be sent to the SUPERINTENDENT—

Rev. JOSEPH JOHNSON,  
St. George's Hall, Old Kent Road, S.E.

Places and Times of Services.	SEPTEMBER.			OCTOBER.		
	14	21	28	5	12	19
Morning Lessons	Prov. xv. Hob. xii.	Eccles. xi, 9-xii. Heb. xiii.	Ps. xxxvii, 21-40 Gal. i.	Isa. vi. Gal. ii.	Isa. xxv. Acts xii, 25- xiii, 15.	1 Sam. iii. Eph. vi.
<b>DERHAM</b> 10.45 Swann Wednesday... 6.30 Haughton Saturday, P.M. 8.0 Nailor Cressenhall Union 2.30	Swann Haughton Nailor	Haughton HF Haughton HF Dunt	Quiggin Quiggin Haughton Lock	Lemmon CFM Lemmon CFM Cent'ry Mt.(M.) Ford	Gee Gee Haughton Haughton	Haughton CT Haughton CT Haughton Drake Haughton
<b>SHIPDHAM</b> ... 2.30 Quiggin HF 6.30 Quiggin HF 7.30 Haughton T HF	Quiggin HF Quiggin HF Haughton T HF	Clitheroe Clitheroe	Juby Juby	Frazer CFM Frazer CFM	Boyce Boyce (Haughton)	R. Harwood CT R. Harwood CT
<b>BARNHAM BROOM</b> ... 2.30 Shorten 6.30 Shorten 7.0	Shorten Shorten	G. Bunn G. Bunn Haught'n T HF	Anderson Anderson Qy. Meeting	Dunt CFM Dunt CFM	Juby Juby	Tooke CT Tooke CT Haughton
<b>SWAFFHAM</b> 10.30 Gee 6.30 Fake 7.30 Gee Wed., Wesley Guild 7.30 Swaffham Union 3.0	Gee Fake Gee Fake	Norman Norman Gee	Haughton HF Haughton HF Qy. Meeting Gee	Gee CFM Gee CFM Centenary Mt.	Scales Scales Gee Hudson	Gee s CT Gee s CT Gee
<b>MASSINGHAM</b> ... 2.30 Stringer 6.30 Stringer 7.30	Stringer Stringer	Gee HF Gee S HF Gee T HF	Searle Searle	Norman CFM Norman CFM Centenary Mt.	Faireloth Faireloth	Swann CT Swann CT Gee
<b>HOLME HALE</b> ... 2.30 Gould 6.30 Thompson 7.30 Gee	Gould Thompson Gee	Dunt Dunt	Scales Scales Gee	Haughton CFM H'ghton s CFM	Trollope Trollope Gee	Bonnett CT Shingles CT
<b>FRANSHAM (Great)</b> ... 2.30 Gee 6.30 Gee 7.30 Gee	Gee Gee Gee	Cave Cave	Tooke Tooke Gee	Clitheroe CFM Clitheroe CFM	Tillotson Tillotson Gee	Newell CT Newell CT
<b>FAKENHAM</b> 10.45 Sursham 6.30 Bowman 8.0 Swann Friday, P.M. 8.0	Sursham Bowman Swann	Swann Stringer Swann	Gee Gee Qy. Mt. (Mon.)	Swann CFM Swann CFM Cent'ry Mt.(M.) Swann	Swann Claxton Swann	Barker CT Barker CT Swann
<b>RYBURGH (Great)</b> ... 2.30 Joice 6.30 Joice 7.30 Swann	Joice Joice Swann	Tooke HF Tooke HF	Howard Howard Swann	Barker CFM Barker CFM	Swann Swann Swann	Sursham CT Sursham CT
<b>E. RUDHAM</b> ... 2.30 Claxton 6.30 Claxton 7.30 Swann	Claxton Claxton Swann	Hall Hall	Oakford Dunger Swann (Wed.)	Fake CFM Fake CFM	Purdy Purdy Swann	Stringer CT Stringer CT

<b>W. RAYNHAM</b> ... 2.30 Dunger 6.30 Dunger 7.30 Swann	Dunger Dunger Swann	Barker Barker	H. Hall H. Hall Swann	Claxton CFM Claxton CFM	Norbury Norbury Swann	Brown CT Brown CT
<b>SYDERSTONE</b> ... 2.30 Daplyn 6.0 Daplyn 7.30	Daplyn Daplyn	Lambert Lambert	Swann Swann Qy. Meeting	Dunger CFM Dunger CFM Swann (Wed.)	Joice Joice	Fake CT Fake CT Swann
<b>STIBBARD</b> ... 2.30 Haughton HF 6.30 Haughton HF 7.30	Haughton HF Haughton HF	Swann * Swann Swann	Daplyn Joice	Stringer CFM Stringer CFM Swann	Lambert Lambert	Howard CT Howard CT Swann
<b>WELLS</b> ... 10.45 Back 6.0 Back 7.0 P.M. 7.30 Page Thursday	Back Back Page Page	Page HF Page HF Page HF	J. Simpson J. Simpson Qy. Meeting Page	Wright } CFM Wright } CFM Centenary Mt. Page	Searle Searle Page	Faireloth CT Faireloth CT Page Page
<b>OLD WALSINGHAM</b> 11.0 Wright 6.30 Wright 7.30 Page	Wright Wright Page	Claxton Claxton	Page Warren Qy. Meeting	Sursham CFM Sursham CFM	Haughton s Haughton s	Page CT Daplyn CT
<b>NEW WALSHAM</b> 2.0 J. Simpson 6.10 J. Simpson 7.30	J. Simpson J. Simpson	Fuller Fuller Page	Page HF Page HF	Searle CFM Searle CFM Centenary Mt.	Daplyn Daplyn	Page CT Page CT Page
<b>HOLKHAM</b> ... 2.30 Purdy 6.0 Purdy 7.30 Page	Purdy Purdy Page	Page Dunthorne	Bowman HF Bowman HF Page HF	Fairecloth CFM Fairecloth CFM	Back Back Page	Ward CT Warron CT
<b>HINDRINGHAM</b> ... 2.30 Fuller 7.30 Page	Fuller Page	Faireloth	Hall Page	J. Simpson CFM	Haughton Page	Purdy CT
<b>BURNHAM (Market)</b> 2.30 Page HF 6.30 Page HF 7.30	Page HF Page HF	Searle HF Searle HF Page	Sursham Sursham	Purdy CFM Purdy CFM Centenary Mt.	Page Page	Dunthorne CT Mrs. Brown CT Page
<b>WATTON</b> ... 10.45 Cave 6.30 Cave 8.0 Quiggin Mon. Wesley Guild	Cave Cave Quiggin	Quiggin Webster Quiggin	Trollope Frazer Qy. Meeting	Page CFM Page CFM Centenary Mt.	Saunders Saunders Quiggin	Quiggin CT Quiggin CT Quiggin
<b>SAHAM (Toney)</b> ... 2.30 Dunt 6.30 Dunt 7.30 Quiggin	Dunt Dunt Quiggin	Webster Quiggin	Trollope Trollope Quiggin	Page CFM Tillotson CFM	Quiggin Quiggin	Scales CT Scales CT
<b>L. CRESSINGHAM</b> ... 2.30 Nailor 6.30 Nailor 7.30	Nailor Nailor	Trollope Trollope Quiggin	R. Harwood R. Harwood	Quiggin CFM Quiggin CFM	Garner Garner	Frazer CT Frazer CT Quiggin
<b>STANFORD</b> ... 6.30 Wednesday 7.30						
<b>SAHAM GROVE</b> ... 2.30 Tillotson 7.30 Quiggin	Tillotson Quiggin		Hardy Quiggin	Scales CFM	Howarth Quiggin	Boyce



## SOCIETY STEWARDS

FAKENHAM	Mrs. C. Purdy, Thorpe Road, Fakenham
WELLS	William Avery, 5, Queen's Road Miss Yarham, Freeman Street, Wells
NEW WALSHINGHAM	J. Cooper, Bolt's Close, Wells
HELHOUGHTON	J. Creed, Theatre Road, Wells Mrs. J. Williamson, Slathe Street, Wells
HINDRINGHAM	H. Beane, Mr. Mayes, Walsingham J. H. Chastney, Tatterford, Mrs. Lawrence The Lodge, West Raynham
BINHAM	G. W. Dent, R. Abel, Hindringham, Fakenham
WHISSONSETT	E. Seals, Westgate, Binham
GREAT RYBURGH	J. Edwards, Whissonsett, Deneham Mrs. M. Bloy, Highfield, Great Ryburgh Charles Chastuey
SOUTH CREAKE	Mrs. R. Barnes, The Arch, Back St., South Creake, Fakenham
NORTH CREAKE	J. Keeley, W. Hudson, North Creake, Fakenham
GREAT SNORING	T. White, W. Colman, E. W. Shackcloth, Great Snoring, Fakenham
OLD WALSHINGHAM	Mrs. J. Burt, Old Walsingham, Mrs. Prior,
SCULTHORPE	G. Boast, Miss Sayer, Southorpe, Fakenham
WEST RAYNHAM	John Boggis and Sidney Borrott, West Raynham, Fakenham
EAST BARSHAM	Mrs. E. Skelton and Mrs. R. Riches, East Barsham.
LITTLE SNORING	H. Smith, Lt. Snoring, Fakenham
WIGHTON	Mr. & Mrs. E. Bennell, Wighton
STIFFKEY	Mrs. Gidney, Stiffkey, W. Sutton
BRISLEY	D. Tait, Brisley, Dereham
COLKIRK	Mrs. E. Badd, E. Bilney
WARHAM	D. Whiteside, Colkirk, Mrs. Barnes
HOLKHAM VILLAGE	Mrs. Sadler, Warham
STIBBARD	W. Ward, Holkham Village, Wells
GATELEY	Mrs. Betts, Stibbard
NEW HOLKHAM	W. Betts, Gateley, Dereham G. Yarham, New Holkham
BROOM GREEN	B. Taylor, Quarles
HORNINGTOFT	Miss Leverington, Broom Green, Dereham
THURSFORD	Miss V. Blyth, Horningtoft, Dereham
LANGHAM	C. Plumby, H. Baker Thursford J. T. Boast, Post Office, Langham

## CIRCUIT COMMITTEES

**CIRCUIT**—All the Members of the Quarterly Meeting.  
**GENERAL PURPOSES AND FINANCE**—The Ministers of the Circuit,  
 Circuit Stewards, and Circuit Officers.  
**YOUTH**—The Ministers of the Circuit, Circuit Stewards, Officers of  
 Sunday Schools, C.E., Guilds and Band of Hops, etc., all Sunday School  
 Teachers above 18 years of age and who are members of the Church.  
**OVERSEAS MISSIONS**—The Ministers of the Circuit, Lay Secretary and  
 Treasurer, Representatives from each Sunday School, Christian  
 Endeavour and Guild in the Circuit, one from the Local Preachers'  
 Meeting, the Officers of the Women's Work Department, and two  
 Representatives from each Society, etc.

# The Methodist Church

## FAKENHAM & WELLS CIRCUIT

### Quarterly Plan & Directory

JANUARY 7th to APRIL 8th, 1951

### MINISTERS

REV. F. J. BELL, The Manse, Wells Road, Fakenham. Tel. 2174  
 REV. W. E. MANN, The Manse, Grove Road, Wells. Tel. 283  
 PASTOR R. J. GARD, 95, Queen's Road, Fakenham

### CIRCUIT STEWARDS

MR. R. POWELL, J.P., Gladstone Road, Fakenham, Phone 2232  
 MR. H. HARBELL, Freeman Street, Wells

### CIRCUIT OFFICERS

Quarterly Meeting Secretary: MR. W. AVERY, 5, Queen's Road, Fakenham  
 Local Preachers' Meeting Secretary: MRS. DOY, Moorland-View, Sandy Lane, Fakenham  
 Overseas Missions Secretary: REV. W. E. MANN  
 Overseas Missions Treasurer: MRS. H. PURDY, Thorpe Road, Fakenham  
 Overseas Missions, Women's Section, Secretary: MRS. E. POWELL, Fakenham  
 Overseas Missions, Women's Section, Treasurer: MRS. W. R. GARNER, Godwick Hall  
 Home Missions & Sustentation Fund Secretary: MR. K. DOY  
 Treasurer: REV. F. J. BELL  
 Connexional Fund Treasurer: Mr. H. HARBELL, Freeman St., Wells  
 Chapels Secretaries: MR. and MRS. DOY  
 Circuit Youth Committee Secretary: PASTOR GARD  
 MRS. J. WILLIAMSON, Wells, and MR. H. LEE, Thursford  
 The Department of Christian Citizenship Secretaries: PASTOR GARD and MR. J. COOPER, Wells  
 L.P.M.A.A. Secretary and Treasurer: MR. H. WRIGHT, J.P., Old Walsingham  
 Book Stewards: REVS. F. J. BELL, W. E. MANN, PASTOR GARD  
 Methodist Homes for the Aged: Secretary and Treasurer—MRS. PURDY, Thorpe Road, Fakenham

PRICE 5d.



Table with columns for Churches, Dates (7, 14, 21, 28 in Jan; 4, 11, 18, 25 in Feb; 4, 11, Palm Sunday, Easter Day in Mar; 1, 8 in Apr). Rows list churches and their respective preachers for each date.

REFERENCES

Preachers are requested to send their hymns as early in the week as possible to—Fakenham, Mr. W. Avery, 5 Queen's Rd., Fakenham, Phone: 1015. Wells, Miss D. M. Yarham, Freeman Street.

NEXT QUARTERLY MEETING WILL BE HELD AT FAKENHAM, WEDNESDAY, MARCH 7th, at 3.15 p.m.

PREACHING APPOINTMENTS

	MAY				JUNE				JULY				
	6	13	20	27	3	10	17	24	1	8	15	22	29
FAKENHAM	11.00 6.30	Elliott S Durrant LP Gates LP Soffley SA	Young Pile SA Soffley SA	Elliott S Soffley Elliott	Elliott S Soffley Elliott	Elliott S Soffley Elliott	Whitehouse Mrs. Howley WA Mrs. Howley WA Staden	Whitehouse Mrs. Howley WA Mrs. Howley WA Staden	Elliott S Soffley Elliott	Elliott F Elliott F	Elliott F Elliott F	Elliott F Elliott F	Elliott F Elliott F
GT. RYBURGH	6.30	Serpell	Jordan 2	Gaskin 11 a.m.	Supply 11 a.m.	Supply 11 a.m.	Whitehouse	Supply	Elliott S	Serpell 11 a.m.	Supply 11 a.m.	Supply 11 a.m.	Bugs
SCULTHORPE	2.30	Elliott S	Seekings	Bugs	Supply	Supply	Whitehouse	Hooks	Scott	Serpell	Serpell	Serpell	Mrs. Scott
W. RAYNHAM	2.30	Supply	Harvey SA	Hooks	Supply	Supply	Max Dixon	Mrs. Cook	Elliott S	Serpell	Serpell	Boggs CA	Scott
STIBBARD	5.30 2.30	Sturffins Serpell	Harvey SA Jordan 2	Elliott Elliott	Bugs Supply	Supply	Max Dixon Elliott 5	Supply Supply	Boast	Gaskin	Gaskin	Boggs CA	Scott
FULMDESTONE	2.30	Serpell	Sturffins CA	Sturffins CA	Supply	Supply	Elliott 5	Bugs	Edwards	Mrs. Scott	Mrs. Scott	Jordan 25	Supply
BRISLEY	2.30	Smith	Webdale 7	Elliott 5	Supply	Supply	F.M.	Elliott	Max Dixon	Scott	Scott	Seekings 25	Bartnam
WHISSONSETT	2.30	Supply	Supply LP	Gaskin	Supply	Supply	Miss Cooper 10	Scott	Smith	Elliott 5	Sturffins	Boast	Hooks
COLKIRK	2.30	Supply	Seekings LP	Mrs. Cook	Elliott CA	Serpell	Gaskin 10	Mrs. Scott	Sturffins	Mrs. Elliott	Supply	Elliott 5	Boast
S. CREANE	2.30	Boast CA	Elliott LP	Miss Cooper 10	Hooks	Elliott 5	Supply	Gaskin	Mrs. Scott	Sturffins	Serpell	Supply	Seekings
WELLS	11.00 6.30	Supply Elliott	Supply Elliott	Supply Elliott	Supply Webdale	Supply Webdale	Elliott 5	Beckett Seekings	Soffley FS Miss Riviere	Longley	Longley	Sturffins Soffley	Coggie Soffley
LT. WALSINGHAM	6.30	Nudds 11am Poster 6.30	Barton LP	Soffley	Miss Riviere	Jordan 2	St. Walsingham	Soffley 5	Whitehouse	Edwards	Edwards	Serpell	Sturffins
GT. WALSINGHAM	11.00 Thurs.	Lt. Walsing.	Robinson LP	Sturffins	Elliott	F.M.	Nudds CA Nudds 6.30pm	Soffley 5	Edwards	Webdale 22	F.M.	Varham Soffley	Whitehouse
HINDRINGHAM	2.30	Hooks	W. Hicks LP	Supply	Serpell	Supply	Soffley 5	Miss Cooper 23	Sportsman's H. Hicks	Bugs	Staden	Webdale	Soffley
THURSFORD	2.30	Supply	W. Hicks LP	Seekings	Serpell	Serpell	Elliott	Beckett Soffley	Moore F	Max Dixon	Supply	Blog	Bartnam Soffley
GT. SNORING	2.30	Supply	W. Hicks LP	Seekings	Serpell	Serpell	Elliott	Seekings	Moore F	Max Dixon	Potter	Sturffins	Max Dixon
LT. SNORING	2.30	Supply	W. Hicks LP	Seekings	Serpell	Serpell	Elliott	Edwards	Moore	Max Dixon	Staden	Miss Riviere	Max Dixon
WIGHTON	2.30	Supply	W. Hicks LP	Seekings	Serpell	Serpell	Elliott	Mrs. Elliott	Supply CA	Elliott FS 5	Hooks	Soffley 2	Jordan 2
BINHAM	2.30	Supply	W. Hicks LP	Seekings	Serpell	Serpell	Elliott	Mrs. Elliott	Supply CA	Elliott FS 5	Hooks	Soffley 2	Jordan 2
STIFFKEY	2.30	Supply	W. Hicks LP	Seekings	Serpell	Serpell	Elliott	Mrs. Elliott	Supply CA	Elliott FS 5	Hooks	Soffley 2	Jordan 2
HOLKHAM VILLAGE	2.30	Supply	W. Hicks LP	Seekings	Serpell	Serpell	Elliott	Mrs. Elliott	Supply CA	Elliott FS 5	Hooks	Soffley 2	Jordan 2
NEW HOLKHAM	2.30	Supply	W. Hicks LP	Seekings	Serpell	Serpell	Elliott	Mrs. Elliott	Supply CA	Elliott FS 5	Hooks	Soffley 2	Jordan 2
N. CREAKE	2.30	Supply	W. Hicks LP	Seekings	Serpell	Serpell	Elliott	Mrs. Elliott	Supply CA	Elliott FS 5	Hooks	Soffley 2	Jordan 2

PLAN REFERENCES

CA Chapel Anniversary  
F Flower Service  
FS Family Service  
LP Local Preaching  
LP Local Preachers' Sunday

5 Sacrament of the Lord's Supper  
SA Sundry School Anniversary

**CIRCUIT LOCAL PREACHERS**  
1910 Mrs. E.B. Abel, 32 The Elms, Hindringham.  
1911 Mr. J. Keeley, West Street, North Creake.  
1912 Mr. W.R. Garner, Godwick Hall, Tittleshall, King's Lynn, Tel. Tittleshall 238.  
1913 Mr. H.V. Woodie, 9 Northfield Avenue, Wells.  
1914 Mr. F.N. Chas., 24 Queen's Road, Fakenham.  
1915 Mr. L.H. Scott, 21 St. Peter's Lane, Walsingham.  
1916 Mr. L.H. Scott, 21 St. Peter's Lane, Walsingham.  
1917 Mr. L. Prior, Creamer House, Fakenham.  
1918 Mr. W.M. Jordan, 60 Northfield Crescent, Wells.  
1919 Mr. G. Varham, Post Office, New Holkham, Tel. Wells 305.  
1920 Mr. G. Timmerth, 19 Dereham Road, Hempton, Fakenham.  
1921 Mr. N.G. Edwards, 24 Field Lane, Fakenham, Tel. 2469.  
1922 Mr. S. Bugge, Heater House, Brisley, Dereham.  
1923 Mr. A.J.E. Gaskin, Sunshine Bakery, Hindringham.  
1924 Mr. I.G. Sturffins, 11, Lancaster Close, Fakenham, Tel. 2521.  
1925 Mr. D.E. Whitehead, J.P., Raynham Road, Colkirk.  
1926 Mr. A. Serpell, W.J. Cottage, Fakenham, Tel. 2595.  
1927 Mr. G.F. Bobbin, 28 Freeman Street, Wells.  
1928 Mr. S. Pagan, 1, Westgate, Walsingham, Tel. 401.  
1929 Mr. E.H. Boast, Oakdene, Rudham Shile Lane, Fakenham.

AUXILIARIES

Mrs. H.P. Harrison, 3 Thurford Road, Great Snoring.  
Miss G. Cooper, 8 The Lane, Great Snoring.  
Mrs. H. Baker, 5 The Street, Thurford, Tel. 263.  
Mrs. E.B. Howells, B.A., Sandy Lane, Fakenham, Tel. 2465.  
Mrs. E.B. Elliott, B.A., 72 Wells Road, Fakenham.  
Mrs. W. Wright, 13, Queen's Road, Fakenham.  
Mrs. P. Cook, 4, Greenway Park, Pudding Norton, Fakenham.

READERS

Mr. R. Hooks, 95, Greenway Lane, Fakenham.  
Mr. G. Dent, 89, The Street, Hindringham.

VISITING PREACHERS

Rev. G.T. Eddy, M.A., B.D., 24, Townsend Road, Norwich.  
Rev. A.R. Bopps, 87, Willington Road, Esher, Surrey.  
Rev. A.A. Clayton, St. Andrew's Road, Sherborne, Dorset.  
Rev. and Mrs. J.B. Coggie, 13, The Lizard, Wymondham.  
Rev. F.H. Longley, M.B.E., 117, Melbourn Road, Raystam, Herts.  
Rev. C.T. Staden, Harbord House, Brunstead Road, Stettham, NOR 34Z.  
Mr. A.H. Amis, School House, Trunch, N. Walsingham.  
Mr. A. Barton, 32, Winnold Close, Downham Market.  
Alderman Bartnam, 7, Central Road, Cromer.  
Mr. S.J. Beckett, 16, The Buildings, Syderstone, King's Lynn.  
Mr. Max Dixon, Green Pastures, The Heath, Fakenham.  
Mr. P. Durrant, 4, Oxborough Road, Stoke Ferry, King's Lynn.  
Mr. C.M. Ford, 11, Harden Manor Court, Chadbury Road, Halecrown, Worcs.  
Mr. D. Gase, Barrow, 22, Church Road, Wimbotsham, King's Lynn.  
Mr. H. Harvey, London.  
Mr. W. Hicks, Colwell Hill Farm, Trunch.  
Mrs. W. Hicks, Colwell Hill Farm, Trunch.  
Mrs. E.M.L. Holwey, 35, Hillside, Brunch, Suffolk.  
Mr. A. Jackson, 40, Harvey Lane, Norwich.  
Mr. R. Key, Elston, Alburgh, Harleston, Norfolk.  
Mr. Lincoln.  
Mr. J. Milnes, School House, Clenchwarton, King's Lynn.  
Mr. T. Moore, Green Pastures, Westwood Road, Thorpe, Norwich.  
Mr. J.C. Nudds, 10, Rogers Row, Burnham Market.  
Mr. D.C. Potter, The Beeches, Yaxham, Dereham.  
Mr. S. Rawling, 'Oldencroft', Norwich Road, Dereham.  
Mr. P. Robinson, 4, Vicarage Close, Foulden, Theford.  
Miss H. Riviere, Flaxley Cottage, Holme, Hunstanton.

**SOCIETY STEWARDS**

List of addresses to which correspondence should be sent.

**FAKENHAM:** Mr. R. Loughran, 36, Field Lane, Fakenham.  
**GREAT RYBURGH:** Mrs. C.G. Howard, Willow Farm, 53 Fakenham Road, Great Ryburgh, Tel. 232.  
**SCULTHORPE:** Mr. G. Girdlesone, 30 The Street, Southorpe.  
**WEST RAYNHAM:** Mr. J.O. Boggs, 6 The Drive, West Raynham.  
**STIBBARD:** Mr. A.A. Robotham, Sunnydene, Moor End, Stibbard, Fulmoodstone, Tel. 289.  
**BRISLEY:** Mr. H.J. Tait, 5 Jarvis Drive, Colkirk, Tel. F:ham 2132.  
**WHISSONSETT:**

**COLKIRK:** Mr. D.E. Whiteside, J.P., Raynham Road, Colkirk.  
**SOUTH CREEKE:** Mrs. E.H. Fox, Holly House, South Creeke, Tel. 289.  
**LITTLE WALSINGHAM:** Mr. G. Woodcock, 27 Wells Road, Walsingham.  
**GREAT WALSINGHAM:** Mr. G. Bryan, 11 Westgate, Walsingham, Tel. 401.  
**HINDRINGHAM:** Mr. G.W. Dent, 89 The Street, Hindringham.  
**THURSFORD:** Mr. C. Plumby, Lower Farm, High Street, Thurstford, Tel. 261.  
**GREAT SNORING:** Mrs. G.E. Harrison, 3 Thurstford Road, Great Snoring.  
**LITTLE SNORING:** Mr. F. J. Ayres, The Street, Little Snoring, Wighton, Tel. 261.  
**WIGHTON:** Mrs. W. Scottom, 50 High Street, Wighton, Walsingham.  
**WELLS-NEXT-THE-SEA:**  
**BINHAM:** Mr. R. Buck, Wells Road, Stiffkey, Wells-next-the-Sea.  
**HOLKHAM VILLAGE:** Mrs. Barnes, Post Office, Holkham Village, Wells-next-the-Sea, Tel. Wells 251.  
**NEW HOLKHAM:** Mr. G. Yarham, Post Office, New Holkham, Wells-next-the-Sea, Tel. Wells 305.  
**NORTH CREEKE:** Mrs. Negus, North Creeke, Tel. S. Creeke 262.  
**BROOM GREEN:** (CLOSED)  
 Postal Address - Add **FAKENHAM**, where no other postal town is indicated.

**CARS**

We are grateful to the friends who supply transport for the Preachers. It is the Preacher's responsibility to get in touch with the car driver - early, please.

- 1 Rev. D.H. Elliott.
- 2 Rev. E.J. Sortley.
- 3 Mr. E.W. Boast
- 4 Mr. J. Buck
- 5 Mr. J.G. Stubbell and Mrs. H. Baker
- 6 Mr. W.R. Garner
- 7 Mr. G. Stubbell
- 8 Mr. N.G. Ewerdy
- 9 Mr. D.E. Whiteside
- 10 Mr. A.K. Day
- 11 Mr. G. Girdlesone
- 12 Mr. R.S. Neale, 49 Sandy Lane, Fakenham
- 13 Mr. C. Plumby
- 14 Mr. A. Serpell
- 15 Mr. W.R. Garner
- 16 Wighton Friends
- 17 Mr. Stizelland
- 18 Mr. N.G. Ewerdy
- 19 Mr. D.E. Whiteside
- 20 Walsley Friends
- 21 Mr. A.J. Gaskin
- 22 Mr. G. Girdlesone
- 23 Hind. G. Bryan Friends
- 24 Local Arrangement
- 25 Mr. C. Seekings

**FROM THE SUPERINTENDENT MINISTER**

A year has now passed since we asked the Churches to increase their contributions to the Circuit Fund. The response has been most gratifying. From June 1971 to March 1972 £2,365.68 was given by the Societies, and from June 1972 to March 1973 £2,978.46. This is an increase of £624 - about 26.5%. We are most grateful to all who have given so generously.

We hope for a good gathering at the Circuit Rally on June 13th. Mr. Eddy is a man of wide experience and deep conviction and we believe that God will use his visit to strengthen our faith and increase our commitment to His service. Please do your utmost to come.

Yours sincerely,

Douglas H. Elliott.

**FINANCIAL STATEMENT - MARCH 1973.**

	Income	Expenditure
Balance b/d	251.05	Stipends
Fakenham	256.00	Soft Furnishings
Gt. Ryburgh	10.00	Postage & Stationery
Southorpe	14.00	Wells Telephone
W. Raynham	24.28	27.50
Stibbard	12.00	
Fulmoodstone	32.00	26.96
Colkirk	11.20	Fakenham Telephone
Brisley	18.00	11.85
Walsingham	17.00	Ct. Cont. Ret. & N.J.
Gt. Walsingham	36.00	Travel Fund
Hindringham	43.00	General Assessment
Thurstford	36.00	Manse Rents
Gt. Snoring	17.00	10.00
Wighton	25.40	2.00
Binham	13.00	Pulpit Supply
Stiffkey	11.00	149.89
Holkham Village	3.50	Bal. c/d.
New Holkham	33.00	
Whissonsett	1.55	
H.M. Grant	62.50	
O.M. Offering	2.35	
Wells Telephone	8.38	
returned (2 qtrs.)		
Contributions from		
Donations	2.20	
Colkirk effort	5.20	
Plans	3.15	
Interest (Ryburgh Manse Fund)	10.54	
Fakenham Sisterhood	15.75	
Fakenham Tel. ret. fund	5.00	
	2.50	
	<u>£119.55</u>	
		<u>£119.55</u>

**CIRCUIT NOTICES**

The Circuit Quarterly Meeting will be held at Stiffkey, Wednesday, June 6th at 7.30 p.m.  
 The Local Preachers' Meeting - Friday, June 1st at 7 p.m. at New Holkham.

The Circuit Finance Committee will meet as required.

Circuit Plan, Requests from Preachers and Churches to be sent to the Superintendent Minister, in writing, by the date of the Circuit Quarterly Meeting.

Society Stewards are asked to forward ALL MONIES due to the Circuit Stewards at least a full week before the date of the Quarterly Meeting.

Sacrament of Baptism. Previous notice must be given to the Minister. Both parents are expected to be present. Baptismal certificates may be obtained from the Ministers.

Solemnization of Marriages. The Fakenham and Wells Chapels are registered for Marriages which can take place without the presence of the Registrar. The following Chapels are registered for Marriages with the Registrar present: Brisley, Great Ryburgh, Great Snoring, West Raynham, Hindringham, Little Walsingham, North Creeke, Great Walsingham, Southorpe, Stibbard, Thurstford and Whissonsett.

Burials. The Circuit Ministers can officiate in Churches providing forty-eight hours' notice is given to the Clergyman in charge.

Pastoral Visitation. The Circuit Ministers will gladly respond to requests for pastoral visitation.

Business Meetings. First consult the Minister before arranging date and time of meeting. No business meeting should be held without the presence or consent of a Minister.

**SPECIAL NOTICES**

The Annual Circuit Rally will be at Fakenham on Wednesday, June 13th at 7.30 p.m. Speakers: The Revd. Geoffrey T. Eddy, M.A., B.D., Chairman of the East Anglia District of the Methodist Church.

Coffee is served every Thursday morning from 10.30 at Fakenham Chapel. Proceeds for the Organ Fund.

**The Methodist Church**

**FAKENHAM AND WELLS CIRCUIT**

**PLAN AND DIRECTORY**

May 6th to July 29th, 1973.

**CIRCUIT MINISTERS**

Rev. Douglas H. Elliott, 12 Wells Road, Fakenham, Tel. 2174  
 Rev. Edwin J. Sortley, The Manse, Grove Road, Wells, Tel. 283

**CIRCUIT STEWARDS**

Mr. A.K. Day, Little Dorrit, 71 Wells Road, Fakenham, Tel. 2317.  
 Home Tel. 2441.  
 Mr. H.J. High, J.P., Springdale, Rudham Stile Lane, Fakenham, Tel. 2306  
 Mr. L.H. Dunthorne, 77a, Norwich Road, Fakenham, Tel. 2739.

**CIRCUIT TREASURERS**

Overseas Missions: Mr. L.H. Scott, Dalkeith, 21 St. Peter's Lane, Walsingham.  
 "W.M.": Mrs. C. Plumby, Lower Farm, High St., Thurstford.

**HOME MISSIONS**

Local Preachers: Mr. W.R. Garner, Goodwick Hall, Titteshall, King's Lynn.

**CONNEXIONAL FUNDS**

Street, Hindringham, Fakenham.  
 Christian Citizenship: Mr. G.F. Bobbin, 28 Freeman Street, Wells.

**YOUTH COUNCIL**

Mr. R. Loughran, 36, Field Road, Fakenham.  
 L.P.M.A.A.: Mr. L.H. Scott, Dalkeith, 21 St. Peter's Lane, Walsingham.

**METHODIST HOMES FOR THE AGED**

Mis D. Webdale, 9 Northfield Avenue, Wells.

**CIRCUIT SECRETARIES**

Quarterly Meeting: Mr. E.A. Hulatt, 40 Heath Rise, Fakenham.  
 Local Preachers: Mrs. A.K. Day, Little Dorrit, 71 Wells Road, Fakenham, Tel. 2441.

**OVERSEAS MISSIONS**

Rev. D.H. Elliott, Mr. L.H. Scott, Dalkeith, 21, St. Peter's Lane, Walsingham.  
 W.M. President: Mrs. B. Elliott, 72, Wells Road, Fakenham, Tel. 2147.

**"W.M.": Mrs. A. Serpell, W.I. Cottage, Quaker Lane, Fakenham, Tel. 2595.**

**J.M.A.: Mrs. J. Hamant, Gales Road, Wells.**

Home Missions: Rev. E.J. Sortley and Mr. G. Bryan, 11, Westgate, Walsingham, Tel. 401.

**CHAPEL AFFAIRS**

Mr. S.V. Bird, Lodge Farm, Barney, Fakenham, Tel. Thurs. 216.

**CHRISTIAN CITIZENSHIP**

Rev. E.J. Sortley and Mr. G.F. Bobbin, 28, Freeman Street, Wells.

**CHURCH MEMBERSHIP**

Rev. E.J. Sortley and Mr. D.H. Elliott, Fakenham.

**EDUCATION**

Mrs. D.J. Garrod, Domus, 17 North Drive, Fakenham, L.P.M.A.A.: Mr. L.H. Scott, Dalkeith, 21, St. Peter's Lane, Walsingham.

**CIRCUIT AUDITOR**

Mr. H.J. High, J.P., Springdale, Rudham Stile Lane, Fakenham, Tel. 2306.

Price - 4p.

A COLLECTION OF STORIE ABOUT  
NORFOLK LOCAL PREACHERS

BILLY JARVIS.

Billy Jarvis lived at Stifkey. He had a sister, Rachel Buck, both were members and attended Stifkey chapel. I once went to take a service at the chapel one Sunday afternoon. Rachel was the only one there. But we had a service. Her face shone like the rising sun. One Sunday afternoon, at the time when the Stifkey army camp was still occupied, Billy was in the congregation. He used to sing very lusterly, sometimes in tune, sometimes out of tune. "Well, Jack," he said. "I go up to the camp. I talk to them all alike, colonels, majors, sirs. I talk to them all alike. I take no notice of any of them."

I thought to myself: "I have a good guess that they looked on Billy as a 'Character'." Maybe they also recognised in Billy one of Norfolk's honest gentlemen.

CHARLIE GIDNEY

Charlie was certainly the brains. His sermons always had much depth of thought. I used to visit him quite frequently when he had Parkinson's Disease. His mind was still very clear and his memory very good. One day I called on Charlie and he told me that one Sunday he was planned at our Hindringham chapel for both afternoon and evening services. Charlie said: "I went to your father and mother in law's to tea, but before the meal Mother-in-law made us a cup of tea. Your father-in-law took a mighty drink of tea and said: 'My word I needed that after your dry old sermon!!!.'"

ERNIE LEE THURSFORD

He took over Lime Kiln Farm, Thursford, when his father died. Times were very, very grim in the late 20s and 30s. Barley was seven to eight shillings a coomb. No wonder most farmers were in the red at the Bank. A coomb of Barley is 16 stone. so Ernie had to struggle. To augment his living he also sold coal, and one can imagine the hard work involved, the weighing and delivering hundred weights of coal especially in the winter time when there would be ice and snow to contend with.

I called on Rose, Ernie's widow, some while ago (Rose is now 100 years old) and she was telling me how Ernie would feed his cows and pigs and milk on a Sunday morning. He would have his dinner, cycle to North or South Creak, or another village chapel, and take the service, cycle home, maybe soaking wet. He would change his clothes, feed and milk, have his tea and then go to Thursford chapel for the evening service. What more fitting tribute could be than to say: "Well done, good and faithful servant. Enter into the joy of your Lord."

EDGAR SEALS. BINHAM

Edgar was gardener for Mr. and Mrs. Case of Abbey House, Binham, also "Handy man". For many years he used to accompany me on quite a number of Sundays to conduct a service at one of the village chapels. One Sunday we were at Holkham, Edgar at Holkham Village and I at Longlands. We went to Mr. and Mrs. George Yarham's to tea. Mrs. Yarham said: Have a short cake, Edgar, they are rather hard, but we are short of rations, you know." Edgar ate the short cake. "Have another one, Edgar," she said. "No, no," says Edgar. "As they are rather hard I will have a jam tart."

The minister conducting Edgar's funeral service in the course of his remarks said: "You know, friends, Edgar always said what other people would have liked to have said and never, never dare say."

## HERBERT MACE

A Christian Endeavour Service was in full swing one Tuesday evening at Hindringham Chapel in the mid 1930s. The chapel was full and the minister was preaching. Suddenly there was a strong smell of burning rubber. Father-in-law spotted that "Strawberry" Pells had put a piece of rubber on top of the old Tortoise stove. Without any warning he left his seat, went over to where "Strawberry" was sitting, gave him a resounding box of the ears. No word was spoken. "Strawberry" just shook his head and Father-in-law returned to his seat and the service continued.

Herbert Mace (Father-in law) had a bakery at Hindringham. He made good bread during the week and on Sunday took the "Bread of Life" to the various little village chapels on the Fakenham and Wells Circuit. He was always very quick in everything he did and quick of retort. He told me one day: "Business demands haste. Little bits and quick." One day when he was in the village of Sharrington Mrs. Pygall said that she wanted some yeast. So he jumped off the cart and ran back with the yeast. Jack, the horse, who also was very quick, found he had no one holding the reins and set off at a terrific gallop towards Bulfer Grove. When he got to the bend of the lane the cart turned over and suffered considerable damage. Jack carried on until he came to Gunthorpe Green where he stopped and started to have a feed of grass. When Father-in-law finally got to the Green Mrs. Curson came out and said to him: "Oh, Mr. Mace, I know it's a bad job, but it would have been a thousand times worse if you had been on the cart."

Quick came the reply: "Talk some sense, woman. If I had been on the cart it would not have happened." Which, of course, was quite true.

(Father in Law)

JACK LEVERINGTON     BARNEY

Jack and Mrs. Leverington were staunch supporters of Barney chapel, both in the Sunday School and Sunday services. Jack was also a Local Preacher. Quite frequently I would pick him up at the Crawfish four cross ways and take him to his appointment and I would proceed to mine. Jack was always immaculately dressed and if it looked like rain he always had his mac' folded over his arm. He had a favourite text which I understand he used several times when he was preaching at Hindringham: "I see men as trees walking". Very good man and woman were Jack and his wife.

I was once told of a dear old Local Preacher who would stand up in the pulpit and before he gave out the number of the first hymn would glare at the congregation for a few minutes, then he would slowly disappear behind the pulpit and wait a few seconds then he would jump up and shout "Hallelujah". (This Preacher is believed to have been at Bale)

IAN STUFFINS     FAKENHAM

Ian told me about one dear old preacher who realised that he was not rated as a very acceptable preacher. He prayed in his initial prayer (a) for the good friends who had come to the service; (b) For the friends who were not well and therefore could not attend the service and (c) Finally for the members and friends who had stayed at home after seeing who was planned to conduct the service.







BIBLE CAKE

- (1) 8oz Judges 5 Verse 25 (Last clause)
- (2) 8oz Jeremiah 6 Verse 20
- (3) 1 Tbls 1 Samuel 14 Verse 25
- (4) 3 of Jeremiah 17 Verse 11
- (5) 8oz 1 Samuel 30 Verse 12
- (6) 8oz Nahum 3 Verse 12 (Chopped)
- (7) 2oz Numbers 17 Verse 8 (Blanched and chopped)
- (8) 16oz Kings 4 Verse 22
- (9) Season to taste with 2 Chronicles 9 Verse 9
- (10) A pinch of Leviticus 2 Verse 13
- (11) 1 Tsp. Amos 4 Verse 5
- (12) 1 Tblsp. Judges 4 Verse 19

(Note Leaven means Baking Powder)

Beat Nos. 1,2,3 to a cream, add 4 one at a time, still beating then 5,6,7 and beat again, add 8,9,10 and 11 having previously mixed them and lastly No. 12.

Bake in slow oven for 90 mins.

-0

**SOCIETY STEWARDS**

List of addresses to which correspondence should be sent.

**FAKENHAM:** Mr. R. Loughran, 36, Field Lane, Fakenham.  
**GREAT RYBURGH:** Mrs. C.G. Howard, Willow Farm, 53 Fakenham Road, Great Ryburgh, Tel. 232.  
**SCULTHORPE:** Mr. G. Girdlesone, 30 The Street, Southorpe.  
**WEST RAYNHAM:** Mr. J.O. Boggs, 6 The Drive, West Raynham.  
**STIBBARD:** Mr. A.A. Robotham, Sunnydene, Moor End, Stibbard, Fulmoodstone, Tel. 289.  
**BRISLEY:** Mr. H.J. Tat, 5 Jarvis Drive, Colkirk, Tel. F:ham 2132.  
**WHISSONSETT:**

**COLKIRK:** Mr. D.E. Whiteside, J.P., Raynham Road, Colkirk.  
**SOUTH CREEKE:** Mrs. E.H. Fox, Holly House, South Creeke, Tel. 289.  
**LITTLE WALSINGHAM:** Mr. G. Woodcock, 27 Wells Road, Walsingham.  
**GREAT WALSINGHAM:** Mr. G. Bryan, 11 Westgate, Walsingham, Tel. 401.  
**HINDRINGHAM:** Mr. G.W. Dent, 89 The Street, Hindringham.  
**THURSFORD:** Mr. C. Plumby, Lower Farm, High Street, Thurstford, Tel. 261.  
**GREAT SNORING:** Mrs. G.E. Harrison, 3 Thurstford Road, Great Snoring.  
**LITTLE SNORING:** Mr. F. J. Ayres, The Street, Little Snoring, Wighton, Tel. Mrs. W. Scottom, 50 High Street, Wighton, Wells-next-the-Sea.  
**BINHAM:** Mr. R. Buck, Wells Road, Stiffkey, Wells-next-the-Sea.  
**HOLKHAM VILLAGE:** Mrs. Barnes, Post Office, Holkham Village, Wells-next-the-Sea, Tel. Wells 251.  
**NEW HOLKHAM:** Mr. G. Yarham, Post Office, New Holkham, Wells-next-the-Sea, Tel. Wells 305.  
**NORTH CREEKE:** Mrs. Negus, North Creeke, Tel. S. Creeke 262.  
**BROOM GREEN:** (CLOSED)  
 Postal Address - Add FAKENHAM; where no other postal town is indicated.

**CARS**

We are grateful to the friends who supply transport for the Preachers. It is the Preacher's responsibility to get in touch with the car driver - early, please.

- 1 Rev. D.H. Elliott.
- 2 Rev. E.J. Sortley.
- 3 Mr. E.W. Boast
- 4 Mr. J. Buck
- 5 Mr. J.G. Stubbell and Mrs. H. Baker
- 6 Mr. W.R. Garner
- 7 Fulmoodstone Friends
- 8 Mr. N.G. Ewerdy
- 9 New Walsingham Friends
- 10 Mr. D.E. Whiteside
- 11 Mr. A.K. Doy
- 12 Mr. G. Girdlesone
- 13 Mr. R.S. Neale, 49 Sandy Lane, Fakenham
- 14 Mr. C. Seekings

**FROM THE SUPERINTENDENT MINISTER**

A year has now passed since we asked the Churches to increase their contributions to the Circuit Fund. The response has been most gratifying. From June 1971 to March 1972 £2,365.68 was given by the Societies, and from June 1972 to March 1973 £2,978.46. This is an increase of £624 - about 26.5%. We are most grateful to all who have given so generously.

We hope for a good gathering at the Circuit Rally on June 13th. Mr. Eddy is a man of wide experience and deep conviction and we believe that God will use his visit to strengthen our faith and increase our commitment to His service. Please do your utmost to come.

Yours sincerely,  
 Douglas H. Elliott.

**FINANCIAL STATEMENT - MARCH 1973.**

	Expenditure	
Balance b/d	251.05	Stipends
Fakenham	256.00	Soft Furnishing
Gr. Ryburgh	10.00	Postage & Stationery
Southorpe	14.00	Wells Telephone
W. Raynham	24.28	(2 qtrs.)
Stibbard	12.00	Fakenham Telephone
Fulmoodstone	32.00	Ct. Cont. Ret. & N.J.
Colkirk	11.20	Travel Fund
Brisley	18.00	General Assessment
S. Creeke	13.00	Manse Rents
L. Walsingham	36.00	Sundry
Gt. Walsingham	43.00	Pulpit Supply
Hindringham	43.00	
Thurstford	36.00	
Gt. Snoring	17.00	
Wighton	25.40	
Binham	13.00	
Stiffkey	11.00	
Holkham Village	3.50	
New Holkham	33.00	
Whissonsett	1.55	
H.M. Grant	62.50	
C.M. Offring	2.35	
Wells Telephone		
ret. fund (2 qtrs.)		
Contributions from		
Y. Walsingham	2.20	
Donations	5.20	
Colkirk effort	3.15	
Plans	10.54	
Interest (Ryburgh Manse Fund)		
Fakenham Sisterhood	15.75	
Fakenham Tel. ret. fund	5.00	
	2.50	
	<u>£119.55</u>	
		<u>£119.55</u>

£119.55

**CIRCUIT NOTICES**

The Circuit Quarterly Meeting will be held at Stiffkey, Wednesday, June 6th at 7.30 p.m.  
 The Local Preachers' Meeting - Friday, June 1st at 7 p.m. at New Holkham.

The Circuit Finance Committee will meet as required.

Circuit Plan. Requests from Preachers and Churches to be sent to the Superintendent Minister, in writing, by the date of the Circuit Quarterly Meeting.

Society Stewards are asked to forward ALL MONIES due to the Circuit Stewards at least a full week before the date of the Quarterly Meeting.

Sacrament of Baptism. Previous notice must be given to the Minister. Both parents are expected to be present. Baptismal certificates may be obtained from the Ministers.

Solemnization of Marriages. The Fakenham and Wells Chapels are registered for Marriages which can take place without the presence of the Registrar. The following Chapels are registered for Marriages with the Registrar present: Brisley, Great Ryburgh, Great Snoring, West Raynham, Hindringham, Little Walsingham, North Creeke, Great Walsingham, Southorpe, Stibbard, Thurstford and Whissonsett.

Burials. The Circuit Ministers can officiate in Churchyards providing forty-eight hours' notice is given to the Clergyman in charge.

Pastoral Visitation. The Circuit Ministers will gladly respond to requests for pastoral visitation.

Business Meetings. First consult the Minister before arranging date and time of meeting. No business meeting should be held without the presence or consent of a Minister.

**SPECIAL NOTICES**

The Annual Circuit Rally will be at Fakenham on Wednesday, June 13th at 7.30 p.m. Speakers: The Revd. Geoffrey T. Eddy, M.A., B.D., Chairman of the East Anglia District of the Methodist Church.

Coffee is served every Thursday morning from 10.30 at Fakenham Chapel. Proceeds for the Organ Fund.

**The Methodist Church**

**FAKENHAM AND WELLS CIRCUIT**

**PLAN AND DIRECTORY**

May 6th to July 29th, 1973.

**CIRCUIT MINISTERS**

Rev. Douglas H. Elliott, 12 Wells Road, Fakenham, Tel. 2174  
 Rev. Edwin J. Sortley, The Manse, Grove Road, Wells, Tel. 283

**CIRCUIT STEWARDS**

Mr. A.K. Doy, Little Dorrit, 71 Wells Road, Fakenham, Tel. 2317.  
 Home Tel. 2441.  
 Mr. H.J. High, J.P., Springdale, Rudham Stile Lane, Fakenham, Tel. 2306  
 Mr. L.H. Dunthorne, 77a, Norwich Road, Fakenham, Tel. 2739.

**CIRCUIT TREASURERS**

Overseas Missions: Mr. L.H. Scott, Dalkeith, 21 St. Peter's Lane, Walsingham.  
 "W.M.": Mrs. C. Plumby, Lower Farm, High St., Thurstford.

**HOME MISSIONS**

Local Preachers: Mr. W.R. Garner, Goodwick Hall, Tittleshall, King's Lynn.

**CONNEXIONAL FUNDS**

Street, Hindringham, Fakenham.  
 Christian Citizenship: Mr. G.F. Bobbin, 28 Freeman Street, Wells.  
 Youth Council: Mr. R. Loughran, 36, Field Road, Fakenham.

**L.P.M.A.A.**

Mr. L.H. Scott, Dalkeith, 21 St. Peter's Lane, Walsingham.  
 Methodist Homes for the Aged: Miss D. Webdale, 9 Northfield Avenue, Wells.

**CIRCUIT SECRETARIES**

Quarterly Meeting: Mr. E.A. Hulatt, 40 Heath Rise, Fakenham.  
 Local Preachers: Mrs. A.K. Doy, Little Dorrit, 71 Wells Road, Fakenham, Tel. 2441.

**OVERSEAS MISSIONS**

Rev. D.H. Elliott, Mr. L.H. Scott, Dalkeith, 21, St. Peter's Lane, Walsingham.  
 W.M. President: Mrs. B. Elliott, 72, Wells Road, Fakenham, Tel. 2147.

**"W.M."**

Mrs. A. Serpell, W.I. Cottage, Quaker Lane, Fakenham, Tel. 2595.

**J.M.A.**

Mrs. J. Hamant, Gales Road, Wells.  
 Home Missions: Rev. E.J. Sortley and Mr. G. Bryan, 11, Westgate, Walsingham, Tel. 401.

**CHAPEL AFFAIRS**

Mr. S.V. Bird, Lodge Farm, Barney, Fakenham, Tel. Thurs. 216.  
 Christian Citizenship: Rev. E.J. Sortley and Mr. G.F. Bobbin, 28, Freeman Street, Wells.

**CHURCH MEMBERSHIP**

Rev. E.J. Sortley and Mr. D.H. Elliott.  
 Education: Mrs. D.J. Garrod, Domus, 17 North Drive, Fakenham, L.P.M.A.A., Mr. L.H. Scott, Dalkeith, 21, St. Peter's Lane, Walsingham.

**Circuit Auditor**

Mr. H.J. High, J.P., Springdale, Rudham Stile Lane, Fakenham, Tel. 2306.